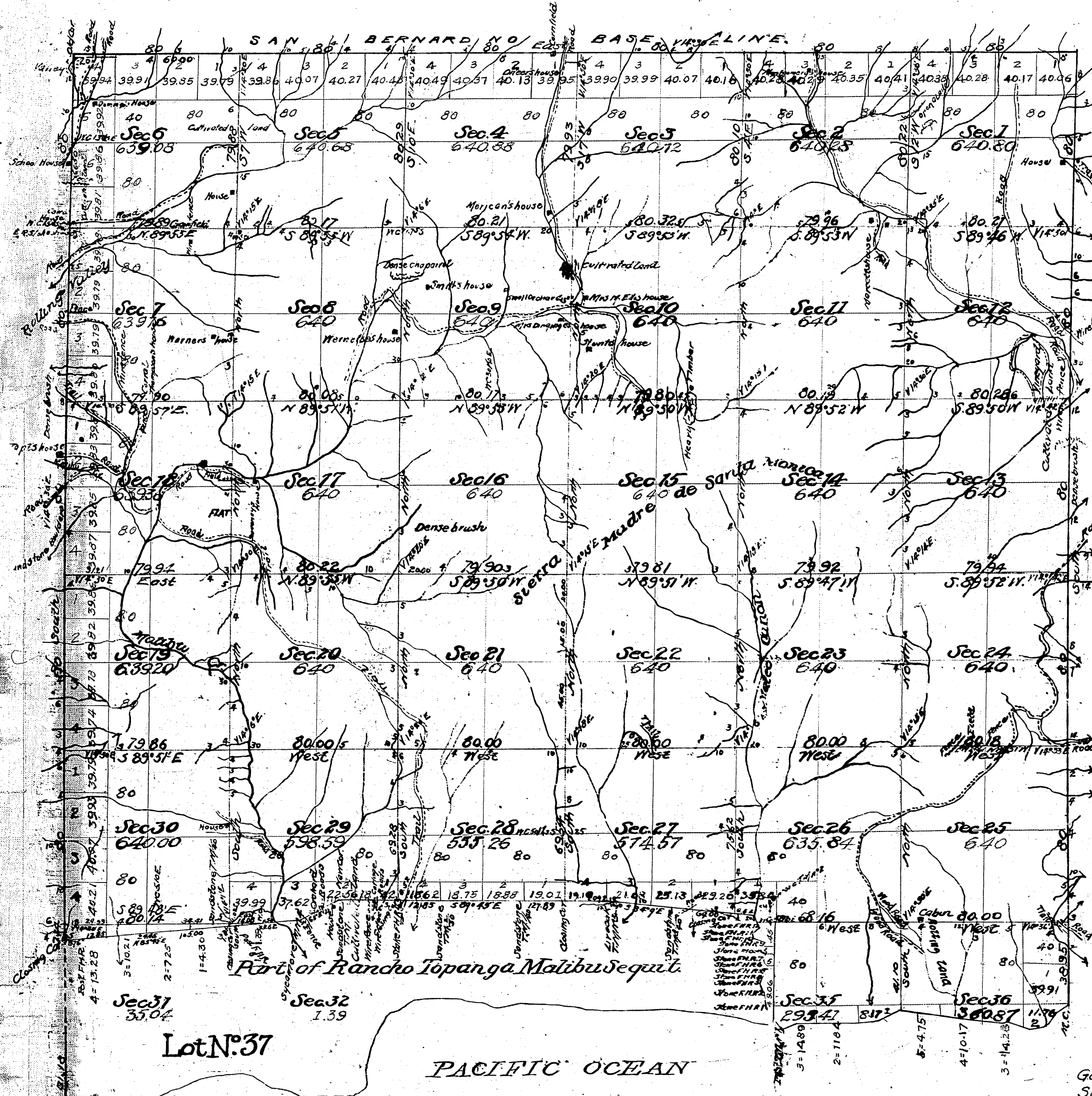


Township N. 1 South, Range N. 17 West, San Bernardino Meridian, California.

T 1 S
R 17 W
①



Meanders.					
Sec.	Course.	Dist.	Sec.	Course.	Dist.
Along shore of Pacific Ocean.			To post T. N. N. 1.		
To calculate bound- aries of Tol. N. 37.					
36	S. 38° W.	5.53	35	N. 36 1/4 W.	11.82
"	41 "	6.95	"	4 1/2 "	7.40
"	56 "	1.38	"	15 "	4.95
"	76 1/4 "	7.46	"	14 E	2.94
N 74 "	10.68		"	46 1/4 "	3.93
S. 68 1/2 "	3.49		"	33 1/2 W.	3.48
N 86 1/2 "	9.18		"	5 1/4 "	1.50
"	62 "	15.07	"	11 E.	4.43
"	87 1/4 "	3.81	"	18 "	3.50
"	80 1/2 "	15.88	"	68 1/2 W.	7.42
"	85 1/2 "	5.18	"	6 E.	1.50
35	S. 79 "	4.81	"	29 1/2 "	4.46
"	61 1/2 "	6.53	"	31 W.	1.65
"	78 1/2 "	2.36	26	31 "	4.10
"	87 "	8.94	To Sycamore Twp. 2.		
N. 89 1/2 "	13.30		Aggregate 65.25		
S. 84 1/2 "	7.87		On 65.25 23 1/2 Ks.		
"	70 1/2 "	8.32			
Aggregate 142.74					
Int. 62.25 74 1/2 Ks.					

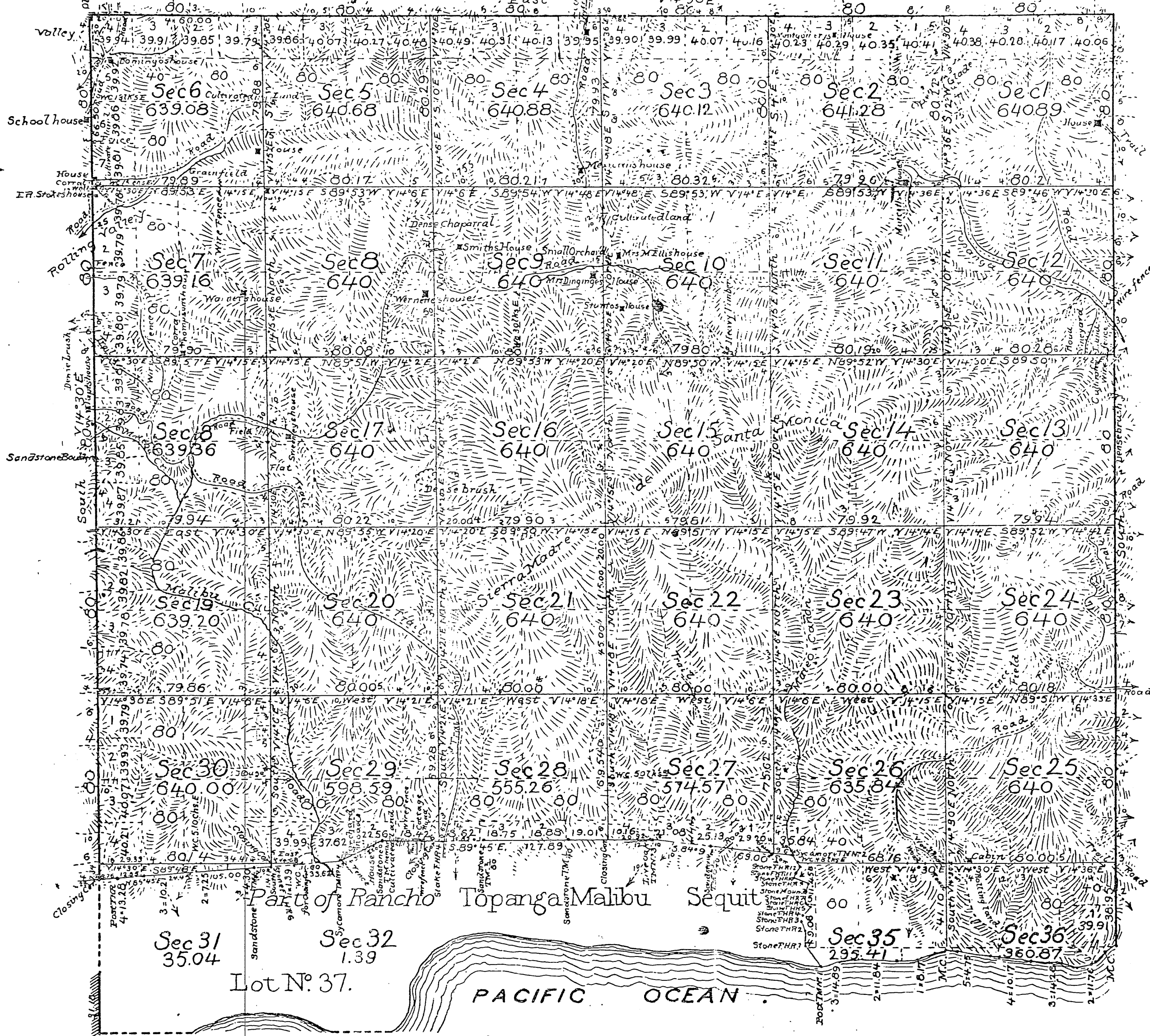
Aggregate Area of Rancho Land	19,697.62 Acs.
Int. N. 37	925.00
Aggregate Area of Township	20,622.62

Lat 34° 7' N. North bound of Twp.
Mean Declination 14° 21' E.

Surveys Designated	By Whom Surveyed	Contract No.	Date	Amount of Surveys	When Surveyed
Township lines and Boundaries of Lot N. 37.	Henry Washington.		Octob. 4th 1852		1853
Township Lines, resurveyed.	G. H. Thompson.		Just Aug 17th 1868		1870
Rest of Township lines, new.	J. R. Glover.	382	November 20th 1884.		1895
Boundaries of Lot N. 37 from Sycamore Twp. 2 to East F.H.R. resurveyed.					
Section Lines, new	M. F. Reilly	383		52 mls. 20 cchs 64 Ks.	
Boundaries of Lot N. 37 from East F.H.R. to Sycamore Twp. 2, resurveyed.					
Meanders of Pacific Ocean					
Connections.					

Gov. Field notes Sec. 17 & 18 See C.S. 9030
Secs. 3, 4, 5, 6, 7, 8, 9, 10, E. side 16, T 1 S, R 17 W.
For ties to N.W. cor. & N. 1/4 cor. of Sec. 12 see Co. Subdiv. por. Sec. 26, 27 & 28, and resurvey por. R.
For field notes on Secs. 14 & 1/2 mile bet. Secs. 13 & 12 and 1/2 mile bet. Secs. 10 & 15 See C.S. 9155 -
For Gov. notes on Secs. 13, 14, 15, 22, 24 - C.S. 9174
For Rancho lines see C.S. 9207 & F.D. 9449
For lines in Sec. 19 to 30 & 35 & 36 & part of East Twp. line C.S. 9237
Part of interior Sec. lines C.S. 9298 -
All of interior Sec. lines C.S. 9313 -
S & W line Sec. 21 - C.S. 9338
For ties to N.W. cor. & N. 1/4 cor. of Sec. 12 see C.S.F.B. 29-72
Subdiv. por. Sec. 26, 27 & 28, and resurvey por. Ranch line - C.S. 9140

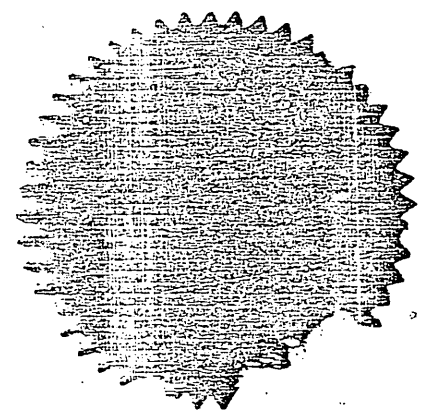
Township N°1 South, Range N°17 West, San Bernardino Meridian, California.



CH 4
O.K.
R.G.

Meander					
Sec.	Course	Dist.	Sec.	Course	Dist.
Along shore of Pacific Ocean.			Thence along boundaries of Lot No 37		
36	S 56° W.	5.53	35	N. 36½° W.	11.82
	41° "	6.95		4 1/2° "	7.40
	56° "	1.38		25° "	4.95
	76¾° "	7.46		14° E.	2.94
	77 1/4° "	10.68		46¾° "	5.93
	S 86½° "	3.49		55½° W.	3.48
	N 86½° "	9.18		5¾° "	1.50
	82° "	15.07		11° E.	4.43
	87½° "	3.81		18° "	3.50
	80½° "	15.88		68½° W.	7.42
	85½° "	5.18		5° E.	1.50
35	S 79° "	4.81		29½° "	4.46
	61½° "	5.53		31° W.	1.85
	78½° "	2.36	26	31° "	4.10
	87° "	8.94	To Sycamore T.M.N° 2		
	N 89½° "	19.30	Aggregate 65.28		
	S 84° 10' "	7.87	Omls 65chs 28lks		
	70° 58' "	8.32			
To Post T.M.N° 1					
Aggregate 142.74					
1 ml. 62chs. 74lks.					

Aggregate Area of Public Land 19697.62 Acres
 " " Lot N° 37 925.00
 Aggregate Area of Township 20622.62



DEPARTMENT OF THE INTERIOR,
 GENERAL LAND OFFICE,
 Washington, D. C. Oct. 31, 1907.
 I hereby certify that this is a true copy
 of the plat of official survey of the lands
 to which it relates, on file in this office.

Lat. 34° 7' N. North bound, of T.P.
 Mean Declination, 14° 2' E.

W.S. Green
 Recorder, General Land Office.

Surveys Designated	By whom surveyed	Contract No.	Date	Amount of Surveys	When Surveyed
Township lines	Henry Washington		October 4 th 1852		1853
Boundaries of Lot N° 37	G.H. Thompson		Inst. Aug. 17 th 1883		1870
Township lines re surveyed	J.R. Glover	382	November 20 th 1884		1895
Rest of Township lines, new	"		"		"
Boundaries of Lot N° 37 from Sycamore T.M.N° 2 to Post F.H.R. re surveyed	"		"		"
Section lines, new	M.E. Reilly	383	"	52 mls 20chs 64lks	"
Boundaries of Lot N° 37 from Post T.M.N° 1 to Sycamore T.M.N° 2 re surveyed	"		"	0. 65. 28.	"
Meanders of Pacific Ocean	"		"	1. 62. 74.	"
Connections	"		"	0. 32. 20.	November 27 th 1895

The above Map of Township N°1 South, Range N°17 West, San Bernardino Meridian, California is strictly conformable to the field notes of the surveys thereon file in this Office, which have been examined and approved. See Office letter of even date.
 U.S. Surveyor General's Office
 San Francisco California
 June 20th 1896

W.S. Green
 U.S. Survey. Gen. Cal.

TOWNSHIP 1 SOUTH, RANGE 17 WEST, OF THE SAN BERNARDINO MERIDIAN, CALIFORNIA.

DEPENDENT RESURVEY, METES-AND-BOUNDS SURVEY, AND SUBDIVISION OF SECTION 7

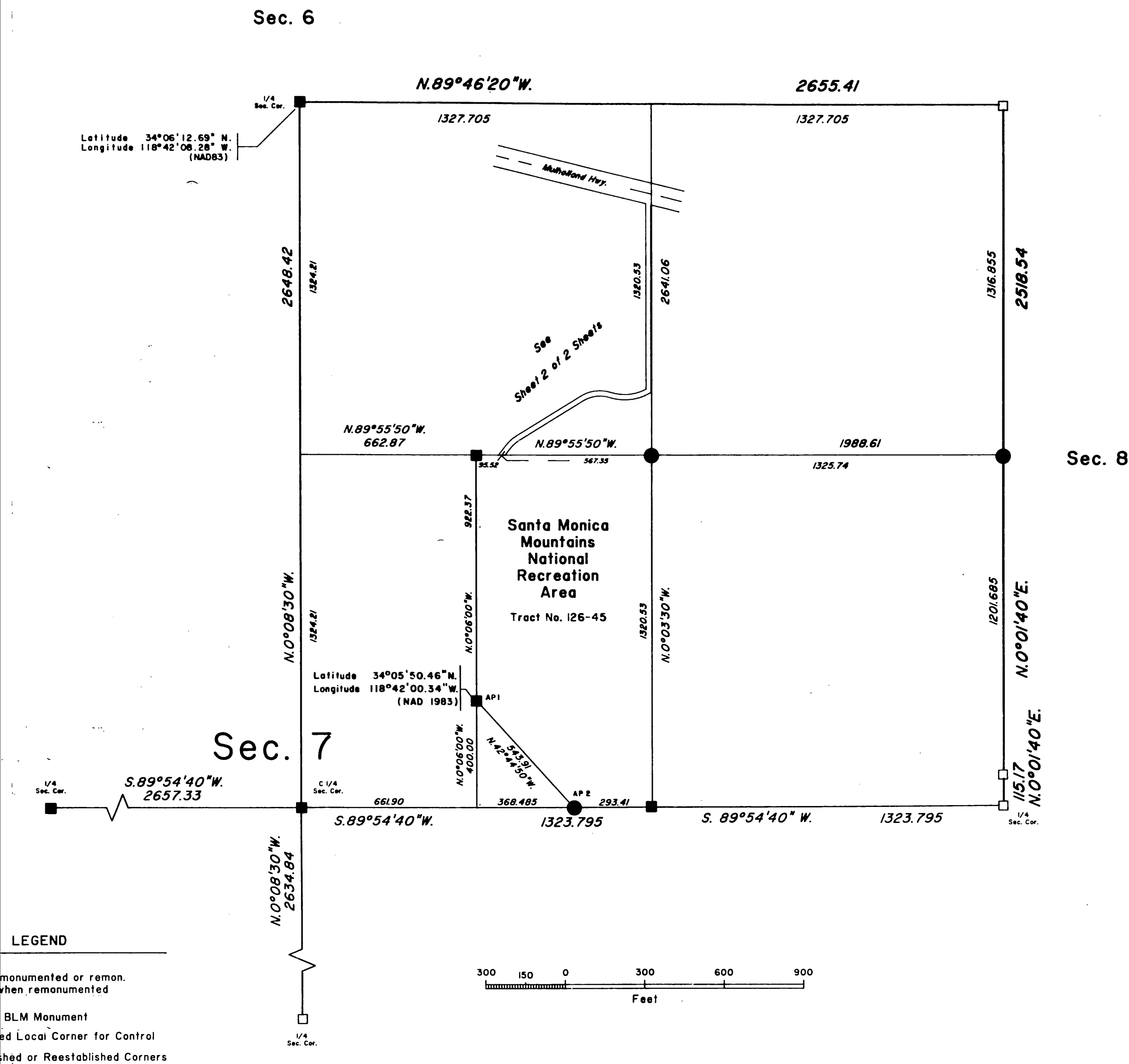
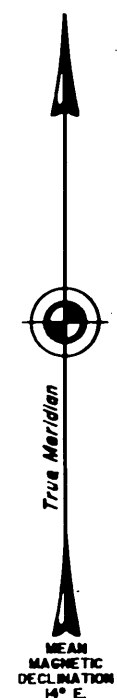
ORIGINAL

A history of surveys is contained in the field notes.

This plat in (2) sheets, represents the dependent resurvey of a portion of the subdivision lines, designed to restore the corners in their true original locations according to the best available evidence, the subdivision of section 7, and the metes-and-bounds survey of a portion of the Santa Monica Mountains National Recreation Area Boundary, in Township 1 South, Range 17 West, San Bernardino Meridian, California.

Lottings and areas are as shown on the township plat approved June 20, 1896.

Survey was executed by David H. Haller, Cadastral Surveyor, beginning June 7, 1994, and completed June 24, 1994, for Group No. 1210, California.



UNITED STATES DEPARTMENT OF THE INTERIOR
BUREAU OF LAND MANAGEMENT
Sacramento, California

This plat is strictly conformable to the approved field notes, and the survey, having been correctly executed in accordance with the requirements of law and the regulations of this Bureau, is hereby accepted.

For the Director

Clifford A. Robinson August 21, 1996

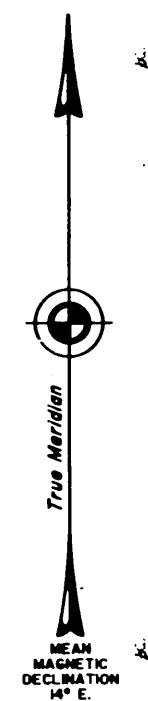
Chief Cadastral Surveyor-California

D.a.d.
dhh

TOWNSHIP 1 SOUTH, RANGE 17 WEST, OF THE SAN BERNARDINO MERIDIAN, CALIFORNIA.

DEPENDENT RESURVEY, METES-AND-BOUNDS SURVEY, AND SUBDIVISION OF SECTION 7

ORIGINAL

Reference should be made to Sheet No. 1
for survey information

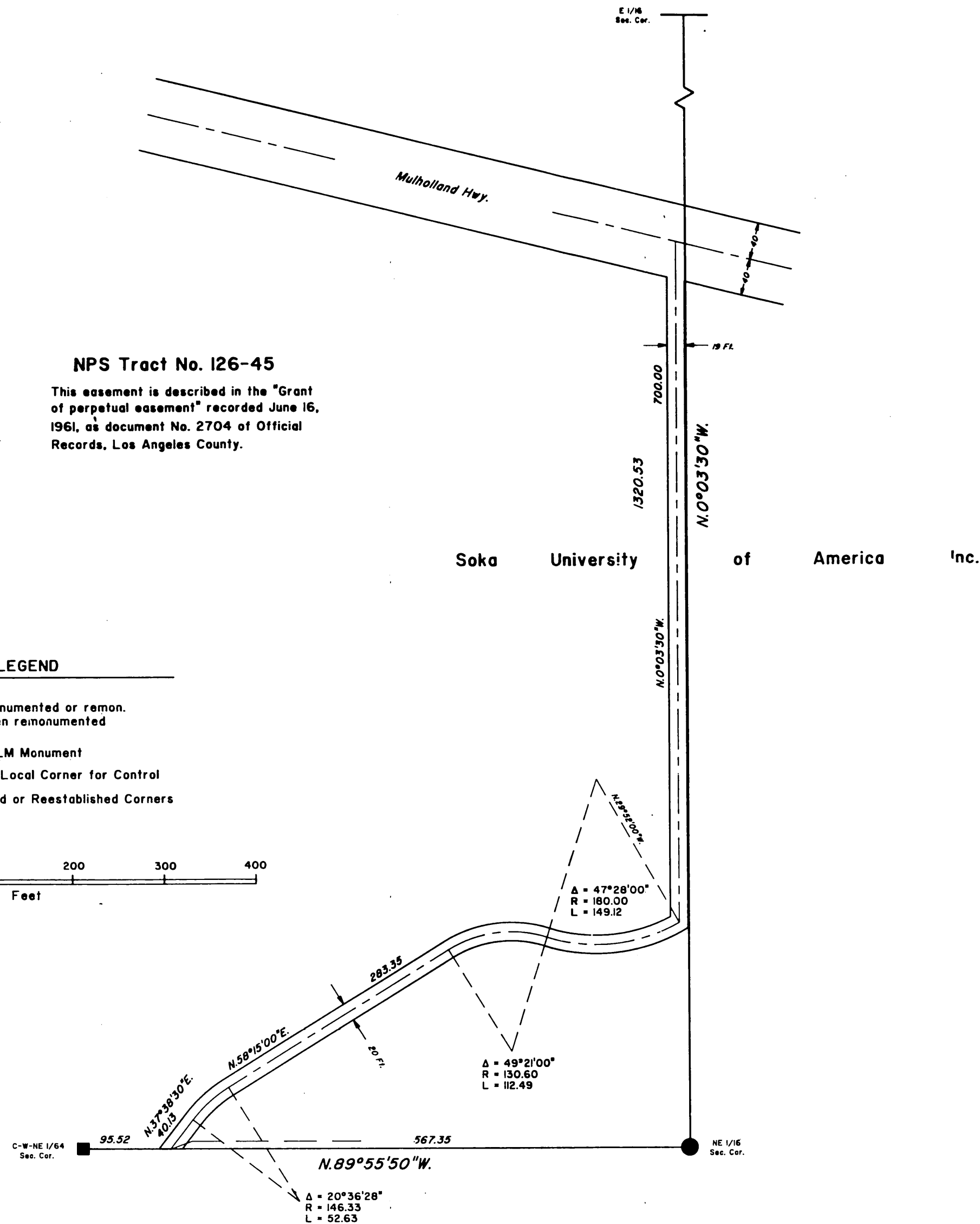
NPS Tract No. 126-45

This easement is described in the "Grant of perpetual easement" recorded June 16, 1961, as document No. 2704 of Official Records, Los Angeles County.

LEGEND

SYMBOLS
Open when not monumented or remon.
Closed symbol when remonumented

- ◇ GLO or BLM Monument
- Accepted Local Corner for Control
- Established or Reestablished Corners



UNITED STATES DEPARTMENT OF THE INTERIOR
BUREAU OF LAND MANAGEMENT
Sacramento, California

This plat is strictly conformable to the approved field notes, and the survey, having been correctly executed in accordance with the requirements of law and the regulations of this Bureau, is hereby accepted.

For the Director

Chief Cadastral Surveyor-California

D.a.d.
dhh

TOWNSHIP 1 SOUTH, RANGE 17 WEST, OF THE SAN BERNARDINO MERIDIAN, CALIFORNIA.

DEPENDENT RESURVEY AND METES-AND-BOUNDS SURVEY

ORIGINAL

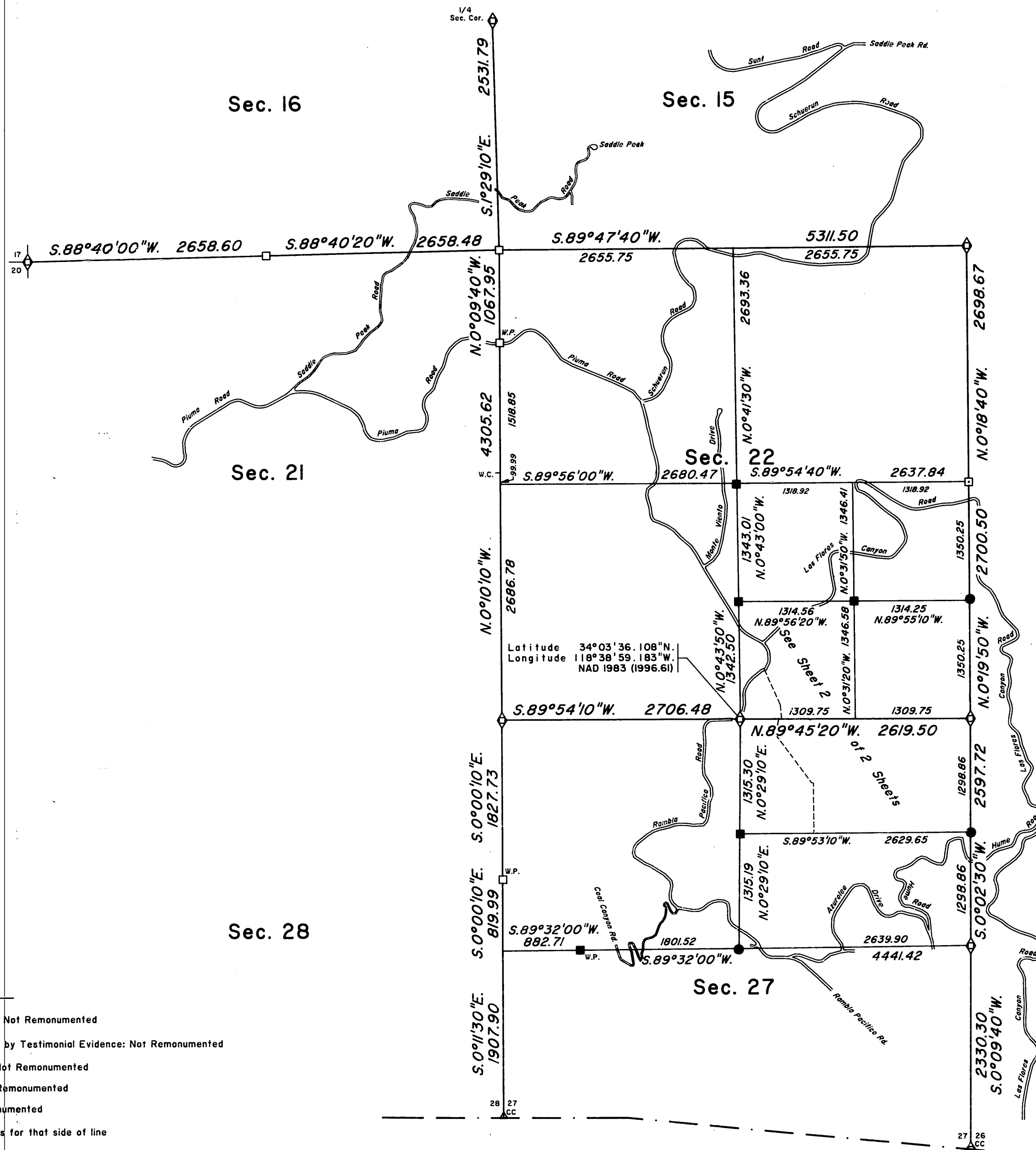
A history of surveys is contained in the field notes.

This plat, in two (2) sheets, represents the dependent resurvey of a portion of the subdivisional lines, designed to restore the corners in their true original locations according to the best available evidence, the subdivision of sections 22 and 27, and the metes-and-bounds survey of a portion of the Santa Monica Mountains National Recreation Area boundary, National Park Service (NPS) Tract No. 135-01, Township 1 South, Range 17 West, San Bernardino Meridian, California.

The plotted topographic features shown on this plat were compiled using resource grade global positioning system (GPS) satellite receivers with a published system precision of ± 15 ft.

Lottings and areas are as shown on the township plat approved June 20, 1896

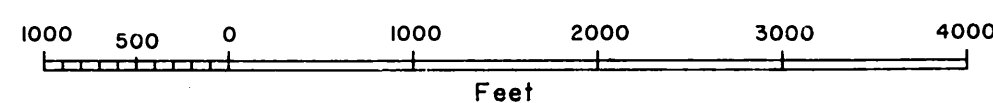
Survey was executed by David H. Haller, Cadastral Surveyor, beginning July 29, 1996, and completed May 15, 1998, pursuant to Special Instructions dated June 2, 1994, and Supplemental Special Instructions No. 1, dated July 15, 1996, for Group 1210, California.



LEGEND

- ◇ Original Evidence Recovered: Not Remonumented
- ◊ Original Position Perpetuated by Testimonial Evidence: Not Remonumented
- Local Evidence Recovered: Not Remonumented
- Local Evidence Recovered: Remonumented
- Position Determined and Monumented
- Partial symbols represent corners for that side of line

Rancho Topanga Malibu Sequit Lot No. 37



UNITED STATES DEPARTMENT OF THE INTERIOR
BUREAU OF LAND MANAGEMENT
Sacramento, California

This plat is strictly conformable to the approved field notes, and the survey, having been correctly executed in accordance with the requirements of law and the regulations of this Bureau, is hereby accepted.

For the Director

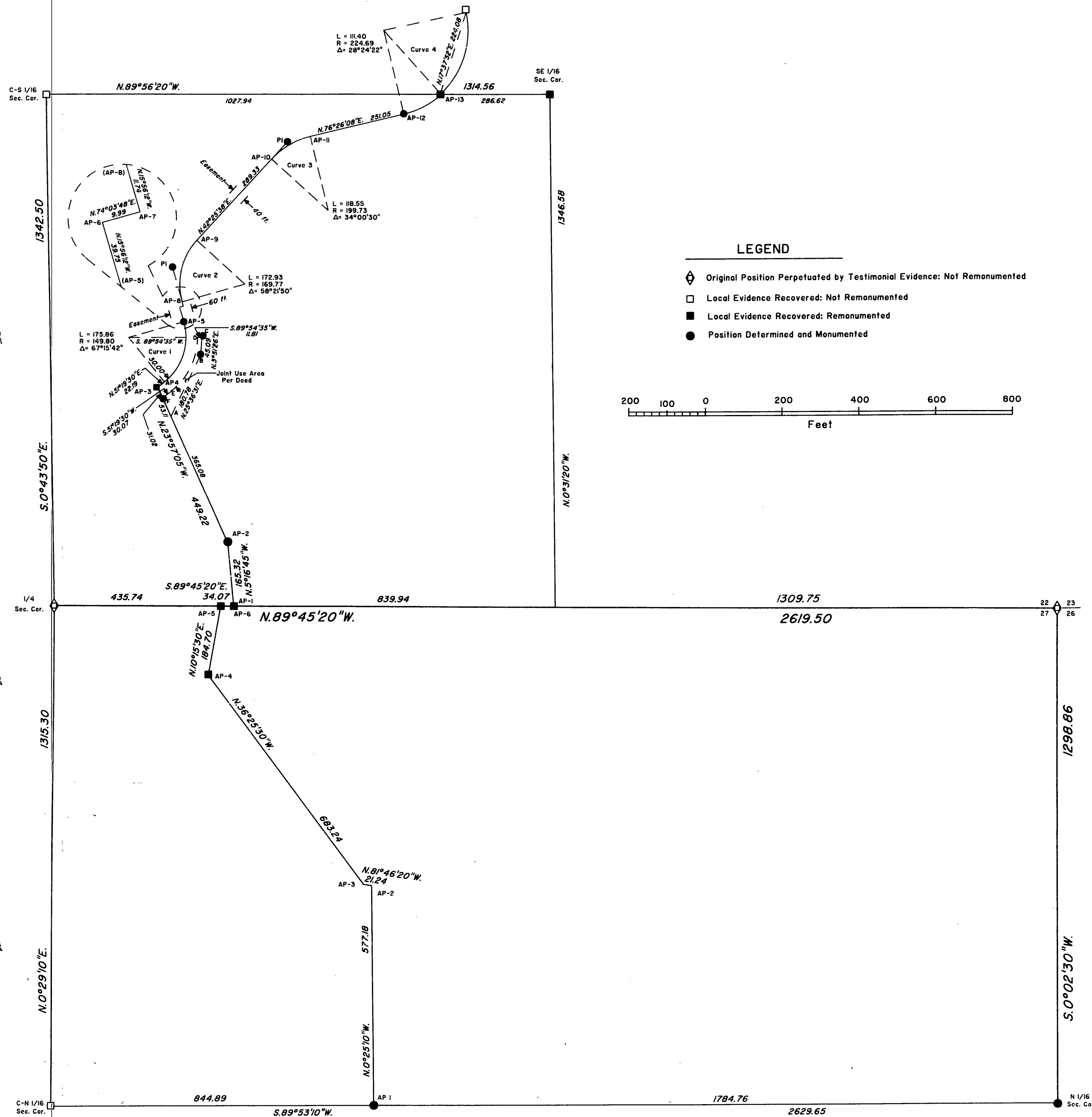
James F. Pugh July 29, 1998
Chief Cadastral Surveyor-California

TOWNSHIP 1 SOUTH, RANGE 17 WEST, OF THE SAN BERNARDINO MERIDIAN, CALIFORNIA.

DEPENDENT RESURVEY AND METES-AND-BOUNDS SURVEY

ORIGINAL

Reference should be made to Sheet No. 1 for survey information.



UNITED STATES DEPARTMENT OF THE INTERIOR
BUREAU OF LAND MANAGEMENT
Sacramento, California

This plat is strictly conformable to the approved field notes, and the survey, having been correctly executed in accordance with the requirements of law and the regulations of this Bureau, is hereby accepted.

For the Director
Lance J. Bishop July 20, 1998
Chief Cadastral Surveyor-California

TOWNSHIP 1 SOUTH, RANGE 17 WEST, SAN BERNARDINO MERIDIAN, CALIFORNIA

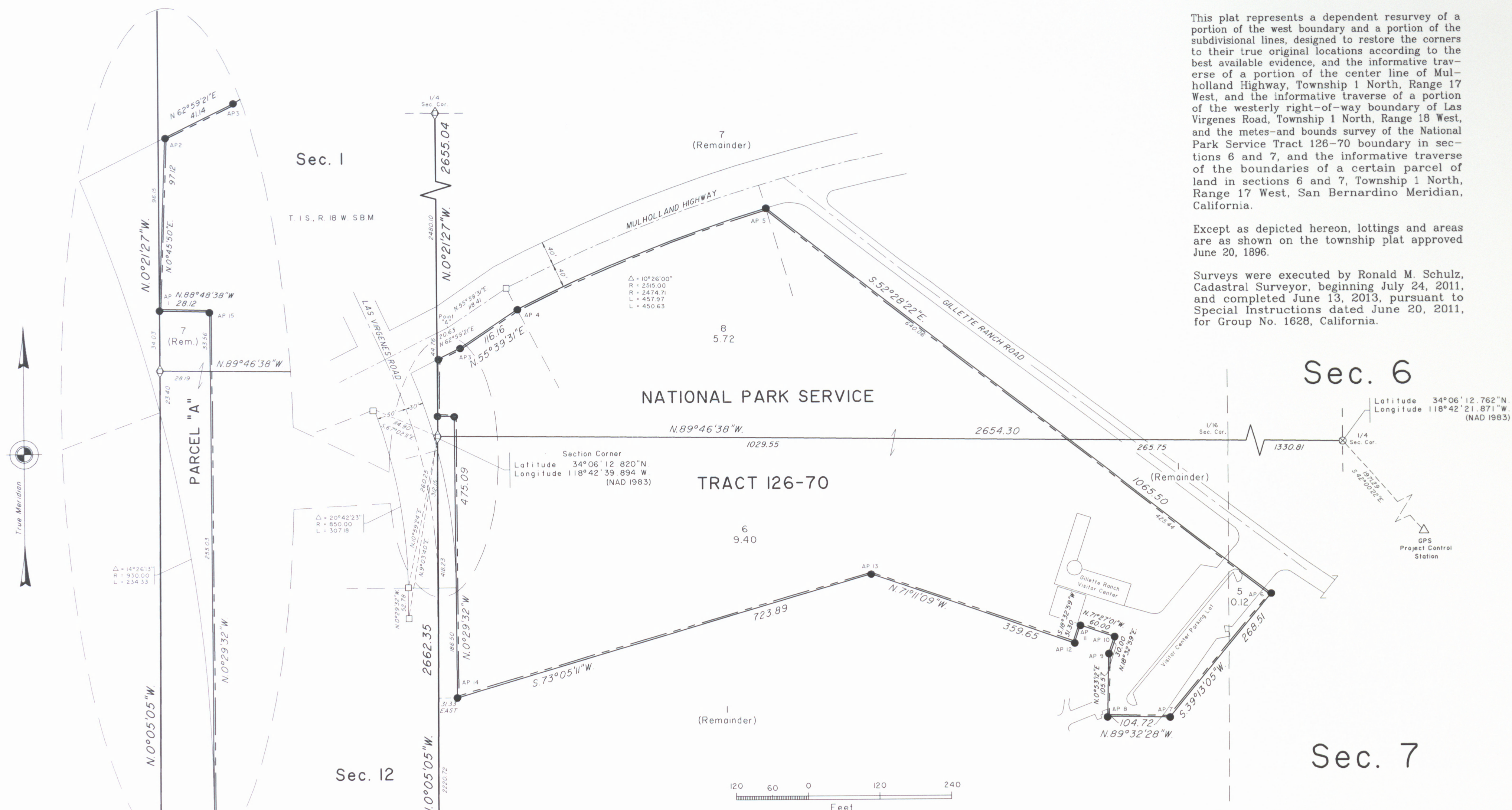
DEPENDENT RESURVEY, METES-AND-BOUNDS SURVEY, AND INFORMATIVE TRAVERSE

A history of surveys is contained in the field notes.

This plat represents a dependent resurvey of a portion of the west boundary and a portion of the subdivisional lines, designed to restore the corners to their true original locations according to the best available evidence, and the informative traverse of a portion of the center line of Mulholland Highway, Township 1 North, Range 17 West, and the informative traverse of a portion of the westerly right-of-way boundary of Las Virgenes Road, Township 1 North, Range 18 West, and the metes-and bounds survey of the National Park Service Tract 126-70 boundary in sections 6 and 7, and the informative traverse of the boundaries of a certain parcel of land in sections 6 and 7, Township 1 North, Range 17 West, San Bernardino Meridian, California.

Except as depicted hereon, lottings and areas are as shown on the township plat approved June 20, 1896.

Surveys were executed by Ronald M. Schulz, Cadastral Surveyor, beginning July 24, 2011, and completed June 13, 2013, pursuant to Special Instructions dated June 20, 2011, for Group No. 1628, California.



UNITED STATES DEPARTMENT OF THE INTERIOR
BUREAU OF LAND MANAGEMENT
Sacramento, California

This plat, having been correctly prepared in accordance with the requirements of law and this Bureau, is hereby accepted.

For the Director

John F. [Signature] July 12, 2013
Chief Cadastral Surveyor-California